

# Relationships between kind of violations of the trade union rights protected by ILO conventions: A statistical implicative analysis of a text mining results

Matthias Studer<sup>1</sup>   Gilbert Ritschard<sup>1</sup>   Lucio Baccaro<sup>2,3</sup>  
Irimi Georgiou<sup>3</sup>   Nicolas S. Müller<sup>1</sup>   Djamel A. Zighed<sup>4</sup>

<sup>1</sup>Département d'économétrie, Université de Genève  
{gilbert.ritschard,matthias.studer}@metri.unige.ch

<sup>2</sup>MIT, Cambridge MA

<sup>3</sup>International Institute of Labour Studies, IILS (OIT), Genève

<sup>4</sup>Laboratoire ERIC, Université de Lyon 2, France  
abdelkader.zighed@univ-lyon2.fr

# Outline

- 1 Introduction
- 2 Data Source
- 3 Analysis
- 4 Conclusion

Goal of the study :

- Give a descriptive view of social dialogue regimes.
- Understand the link with regions.
- Based on ILO conventions 87 et 98.
  - **Convention 87** : condition for trade union independence and rights to industrial action.
  - **Convention 98** : relationships between trade union and employer organizations and condition for collective bargaining.
- Show how implicative analysis complement more classical exploratory data analysis results.

## Project "Social Dialogue Regimes"

- Financially supported by GIAN Foundation<sup>1</sup>.
- University of Geneva.
- University of Lyon 2.
- International Institut for Labour Studies (ILO).

### Project goal :

- Get new insight on Social Dialogue Regimes.
- Understand the socio-economic outcomes and determinant of social dialogue regimes.

---

<sup>1</sup><http://www.ruig-gian.org>

# Outline

- 1 Introduction
- 2 Data Source**
- 3 Analysis
- 4 Conclusion

- Text mining results.
- Based on CEACR report on each convention.
- Predict the probability of the mention of a violation in the report.
- Six types of violations for convention 87 and 5 for convention 98.

---

## Convention 87

- V<sub>3</sub> Right to establish and join workers' organisations
- V<sub>4</sub> Trade union pluralism
- V<sub>6</sub> Election of representatives / Eligibility criteria
- V<sub>7</sub> Organisation of trade union activities
- V<sub>8</sub> Approval and registration of workers' organisations
- V<sub>9</sub> Restrictions on the right to industrial action

---

## Convention 98

- W<sub>1</sub> Anti-union discrimination
  - W<sub>2</sub> Acts of interference
  - W<sub>5</sub> Right to collective bargaining
  - W<sub>6</sub> Designation of bargaining partner / representative trade union
  - W<sub>8</sub> Negotiable issues and substantive outcomes  
of collective bargaining / Permissible restrictions
-

# Error rates (convention 87)

Key Concept (violation)	Learning error rate	cross-validation error rate	std err	Test sample (size 21) number of errors
$v_3$	14.10%	n.a.*	n.a.*	3
$v_4$	5.13%	5.13%	2.50%	0
$v_6$	12.82%	14.1%	3.94%	4
$v_7$	15.38%	n.a.*	n.a.*	7
$v_8$	7.69%	7.69%	3.01%	4
$v_9$	2.56%	2.56%	1.79%	2

\*Cross-validation is not available for  $v_3$  and  $v_7$ , because first split is enforced.



# Data Recoding

- Violation are not always mentioned.
- We do not have a report for each year.
- We need to look at a period.
- Data recoded using maximum predicted probability of violation for period 1997-2002.

## Convention 87

Key concept	Percentage
$v_3$	36.9%
$v_4$	22.7%
$v_6$	31.9%
$v_7$	23.4%
$v_8$	28.4%
$v_9$	61.0%

# Outline

- 1 Introduction
- 2 Data Source
- 3 Analysis**
- 4 Conclusion

## 3 Analysis

- Typology of Countries
- Factorial Multiple Correspondence Analysis
- Graph of Implication Between Types of Violation
- Hierarchical Clustering of Violations

# Typology of Countries

- We seek to identify systems of violations.
- We used a two stage approach :
  - Extraction of principal factor of a multiple correspondance analysis.
  - Agglomerative hierarchical clustering with Ward criteria.

# Typology of Countries

Type of violation	Clusters				Total
	1	2	3	4	
v <sub>3</sub> Right to establish and join workers' organ.	0%	38.9%	51.1%	<b>81.5%</b>	36.9%
v <sub>4</sub> Trade union pluralism	0%	<b>100.0%</b>	0.0%	51.9%	22.7%
v <sub>6</sub> Election of representatives /Eligibility criteria	3.9%	33.3%	22.2%	<b>100.0%</b>	31.9%
v <sub>7</sub> Organisation of trade union activities	2.0%	<b>0.0%</b>	11.1%	<b>100.0%</b>	23.4%
v <sub>8</sub> Approval and registration of workers' organ.	0%	<b>44.4%</b>	26.7%	<b>74.1%</b>	28.4%
v <sub>9</sub> Restrictions on the right to industrial action	<b>0%</b>	88.9%	<b>95.6%</b>	<b>100.0%</b>	61.0%
Percentage of cases in cluster	36.2%	12.8%	31.9%	19.1%	100%
Mean number of violations	0.06	3.06	2.07	5.07	2.04

# Typology of Countries

Cluster 1 : No violation (Clu\_NoViolation).

Cluster 2 : Pluralism restrictions (Clu\_Pluralism).

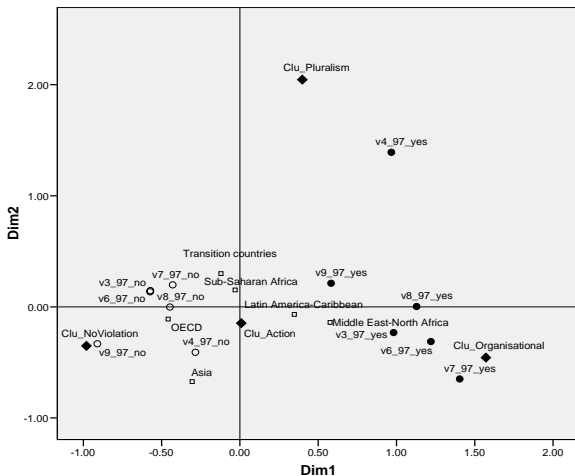
Cluster 3 : Action restrictions (Clu\_Action).

Cluster 4 : Organizational and action  
restrictions(Clu\_Organisational).

## 3 Analysis

- Typology of Countries
- **Factorial Multiple Correspondence Analysis**
- Graph of Implication Between Types of Violation
- Hierarchical Clustering of Violations

# Factorial Multiple Correspondence Analysis

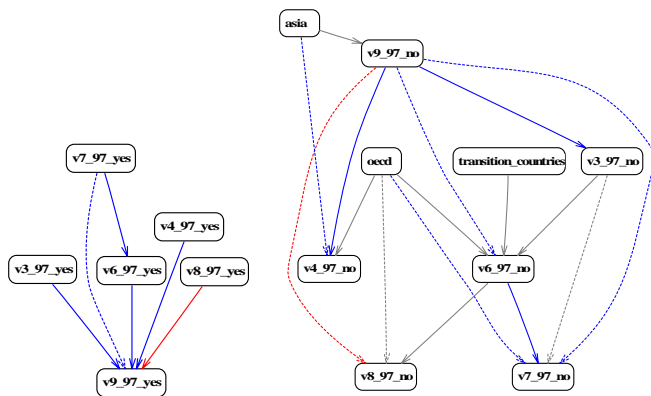




## 3 Analysis

- Typology of Countries
- Factorial Multiple Correspondence Analysis
- **Graph of Implication Between Types of Violation**
- Hierarchical Clustering of Violations

# Graph of Implication Between Types of Violation



Confidence : 99% (red), 95% (blue), 75% (grey, right graph only).

# Typicality of supplementary variables

Path	Caribbean and Latin America	Middle east and North Africa
v7_97_yes ⇒ v6_97_yes ⇒ v9_97_yes	*	**
v7_97_yes ⇒ v6_97_yes		**
v7_97_yes ⇒ v9_97_yes		**
v6_97_yes ⇒ v9_97_yes	**	
v4_97_yes ⇒ v9_97_yes		
v3_97_yes ⇒ v9_97_yes		*
v8_97_yes ⇒ v9_97_yes		*

## Absence of violations

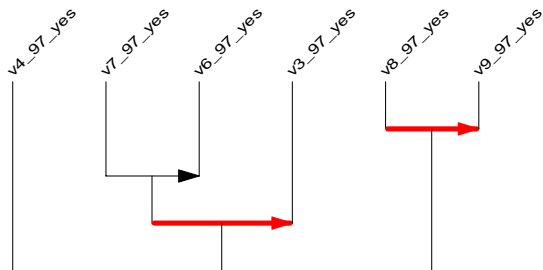
Path	Asia	OECD
v9_97_no ⇒ v4_97_no	**	*
v9_97_no ⇒ v6_97_no ⇒ v7_97_no	**	*
v9_97_no ⇒ v6_97_no	**	*
v6_97_no ⇒ v7_97_no		**
v9_97_no ⇒ v8_97_no	**	**
v9_97_no ⇒ v3_97_no	**	

One star indicate a typicality with a risk of 10% and two stars a risk of 5%.

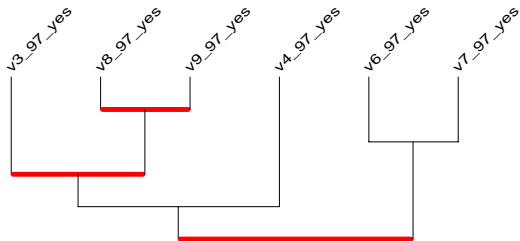
## 3 Analysis

- Typology of Countries
- Factorial Multiple Correspondence Analysis
- Graph of Implication Between Types of Violation
- Hierarchical Clustering of Violations

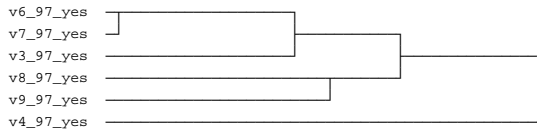
# Cohesive Tree of Violations



# Similarity Tree of Violations



# Dendrogram of Violations



Average linkage, Pearson correlation proximity

# Outline

- 1 Introduction
- 2 Data Source
- 3 Analysis
- 4 Conclusion**



# Conclusions

About "Social Dialogue Regimes" :

- We identified different kind of social dialogue regimes.
- $v_9$  is implied by every type of violation.
- Organizational violations are closely linked.

From a methodological point of view :

- Importance to look at implication between negative indicator if it make sens.
- Robustness of hierarchical violation clustering

**Thank you for your attention !**